

# Understanding Coastal Biodiversity in the Americas Through the Marine Biodiversity Observation Network (MBON) Pole-to-Pole

**Lizcano-Sandoval, L; Montes, E; Muller-Karger, Frank**

College of Marine Science, University of South Florida, St Petersburg, FL, USA

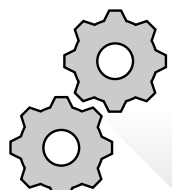
Understanding coastal biodiversity across the Americas is challenging due to the monitoring is sparse, sampling methodologies are different, and data is typically not made publicly available.




MBON collaborates with global partners to make available observations needed to ensure the conservation and management of living marine resources, which support essential human needs.

## MBON Benefits:

 Biodiversity knowledge

 Monitoring coordination

 Understanding processes

 Open-access data

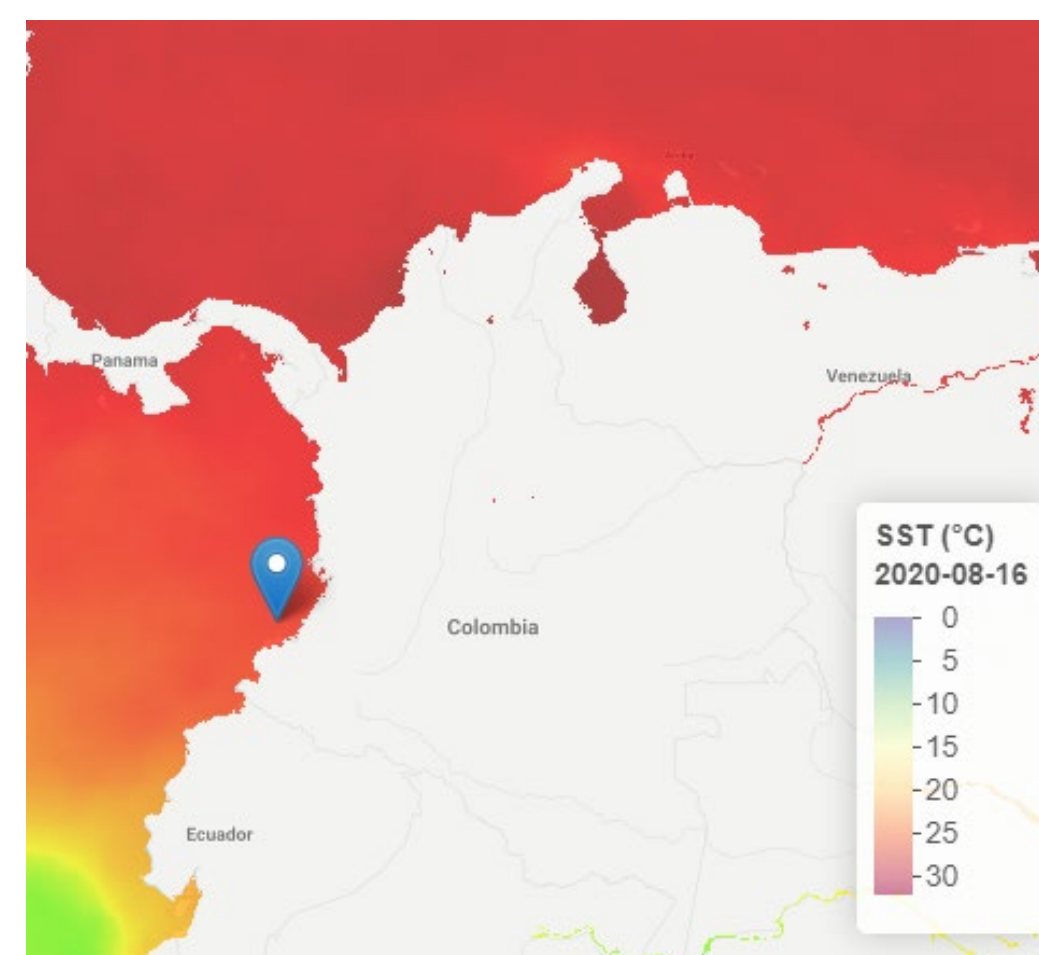
 Decision making



**Monitoring sites  
across the Americas**



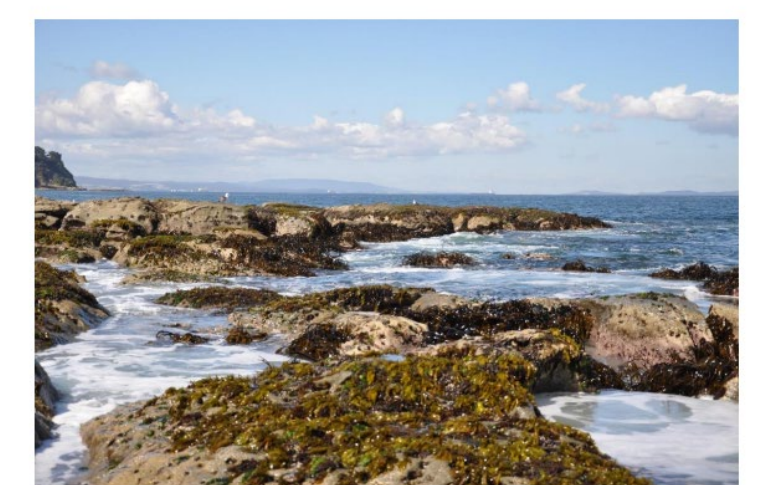
**In situ measurements.** Photo: E. Londoño (UniValle) at Gorgona Island, Colombia, 2018



**Spatial models of SST, Chl and  
seascapes.** SST map and  
monitoring site in Gorgona Island

## Sampling protocol for assessment of marine diversity on rocky shores

Prepared by the Marine Biodiversity Observation Network Pole to Pole of the Americas  
MBON Pole to Pole  
(Modified from the SARCE South American Research Group on Coastal Ecosystems for  
sampling on rocky shores protocol)



**Sampling protocols and  
data science methods.**  
Available on the MBON website

MBON has allowed the integration of satellite and in situ methods for measuring ocean biodiversity, filling gaps of knowledge in the Americas through a coordinated effort.

## Achievements:

- Standardized protocols for monitoring biotic and abiotic parameters in coastal zones (available on the Ocean Best Practice System).
- >20,000 records of marine fauna published on OBIS.
- Developing indices of marine biodiversity.
- Production of large-scale seascape maps.

**MBON Website:**  
<https://marinebon.org/p2p>

**Point of contact:**  
Enrique Montes:  
emontes@usf.edu

**Financial support:**

